



10012358 - Splice Tray Upgrade Kit

Product Overview

Additional 16 splice tray for use in S600 series backboards. Enables additional splice capacity upgrades for network fibre, or a transition splice location for MDU drop cables to ruggedized pigtails.

Features

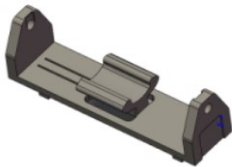
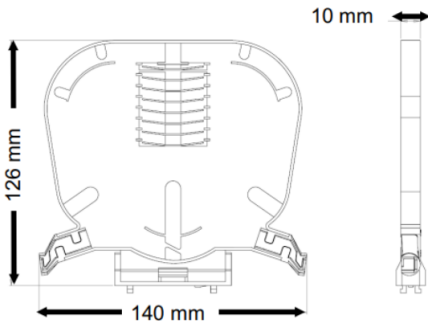
- For use with 250µm, 900µm and 2mm pigtails
- 16 heat shrink splice locations

Applications

- S600 series backboards

Product Information

Weight	< 0.5 kg
Mounting	Hinge snap-fit clip
Connections	n/a
Termination Count	16f
Termination Type	Heat shrink or mechanical splice
Supported patch cables	250µm, 900µm and 2mm pigtails
Operating Temperature	- 20°C + 40 °C



Each cassette is supplied with a hinged base

Ordering Information

Part number	Description
ISCVM-CASSETTE-KIT	16f Splice tray, lid and hinge assembly