

## Secondary Node Backboard—5mm Ducts

### Product Overview

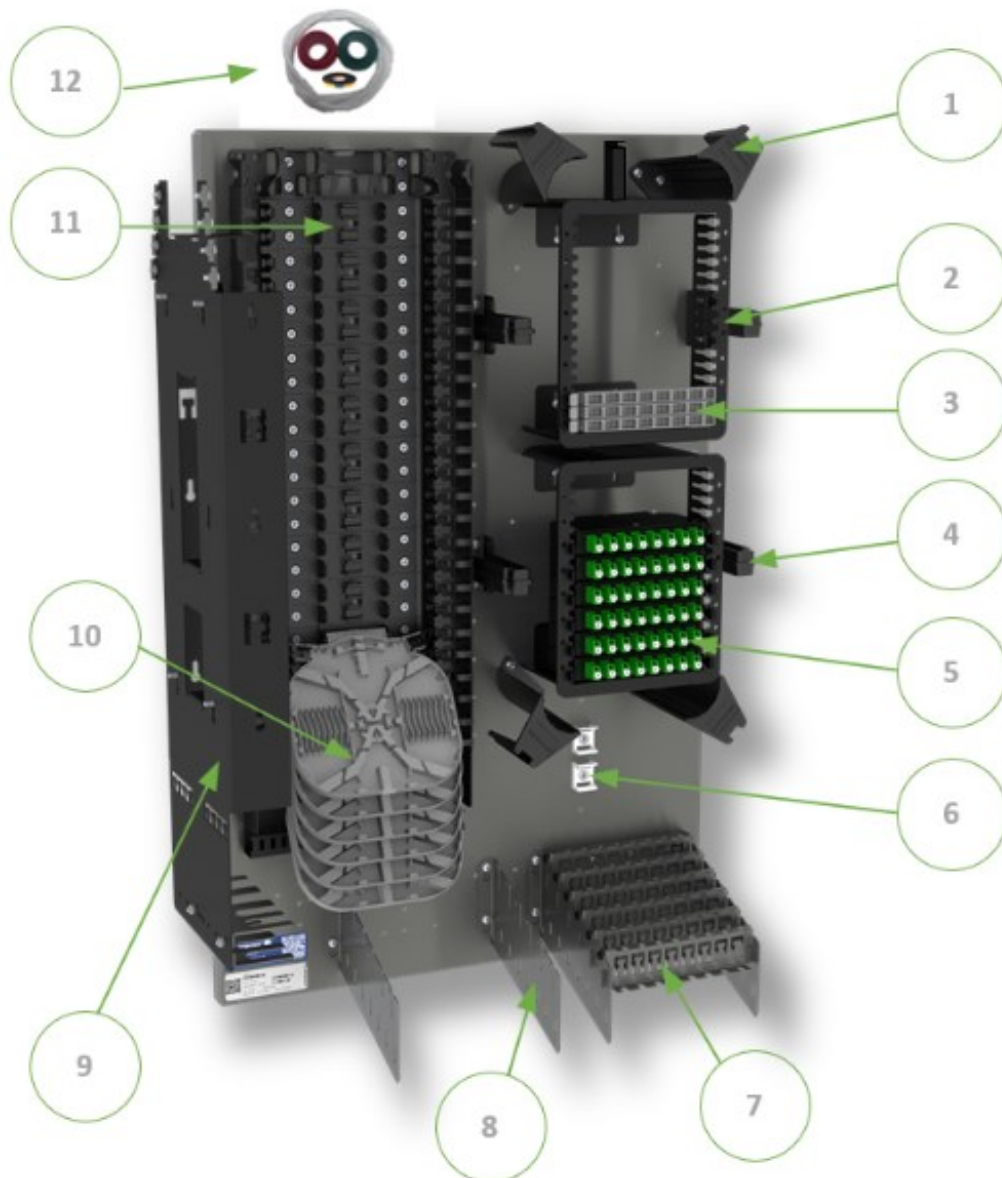
A passive optical backboard assembly for use within Cityfibre Secondary Node cabinets.

The backboard configuration is matched to Cityfibre build specifications for Secondary Nodes and comes complete with duct management accessories to enable swift deployment within a Cityfibre specification street cabinet.

This product arrives semi assembled, along with additional sub-assemblies within a single shipping carton.

This document contains installation instructions for all components contained within the carton.

### Key Components

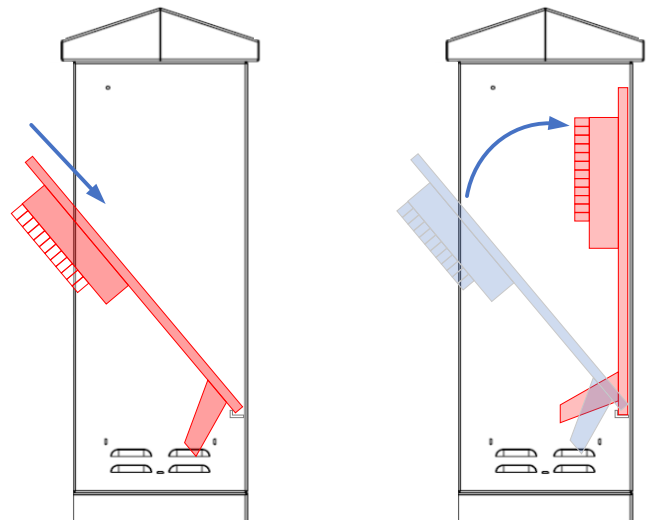


No	Description	Qty
1	Cable Rad Manager	4
2	RDJ Mounting Chassis	2
3	7x LC Storage Bay	3
4	RDJ Mounting Chassis	2
5	1:8 RDJ Splitter Module	6
6	Cable Anchoring Base	2
7	Drop Duct Manager Mounting Bracket	4
8	5mm x 8 Drop Duct Manager & Rivets	6
9	LHS Midspan Unit	1
10	24f Grey Splice Tray	6
11	24 Tray Raceway	1
12	Cable Accessory Pack (Spiral wrap, Velcro and foam tape)	1

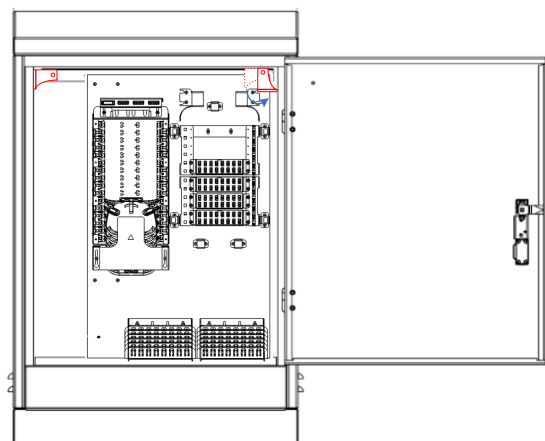
## Backboard Installation

Hold the backboard at approx. 45degrees from vertical with the patch field face down and insert the bottom edge into the cabinet, ensuring it sits safely on the lower mount bracket.

Carefully push the top of the backboard backwards until it sits vertically in the cabinet



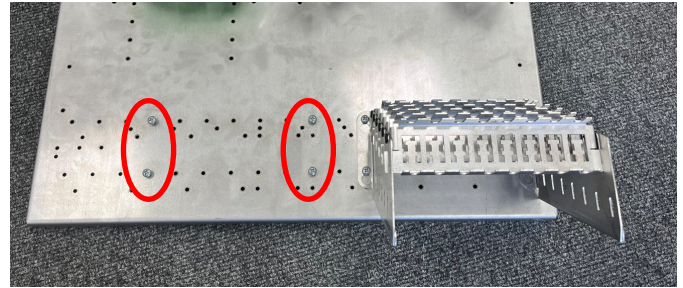
Hold the backboard in place and rotate the 2x retaining cams down to the vertical position to retain the backboard.



**NOTE:** Generic backboard images used for illustration purposes.

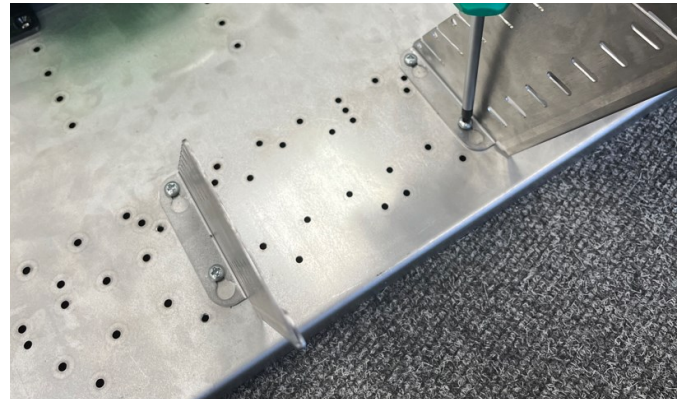
## Drop Duct Manager Installation

Mounting screws for the drop duct manager brackets are pre-installed at the factory.

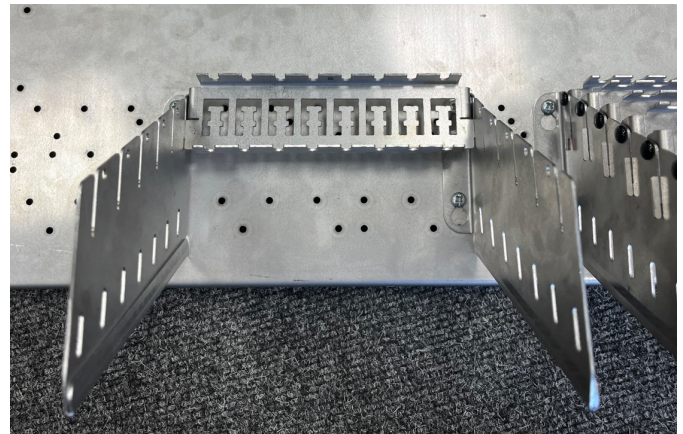


Open the accessory bag containing the drop duct manager brackets and locate the brackets onto the mounting screws in the backboard as shown.

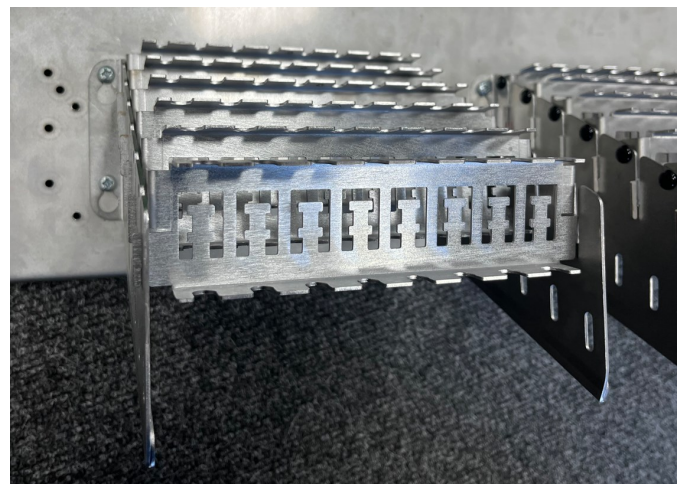
Tighten the mounting screws



Mount the 1st drop duct manager in the rear most position of the brackets, taking care to align the mounting slots on all 3 components.



Mount the remaining 5 duct managers in the same way, each time starting with the rear most available mounting position.

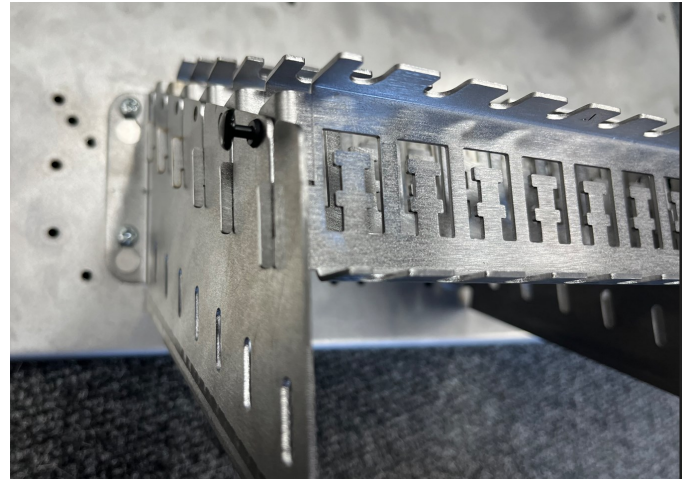




## Drop Duct Manager Installation

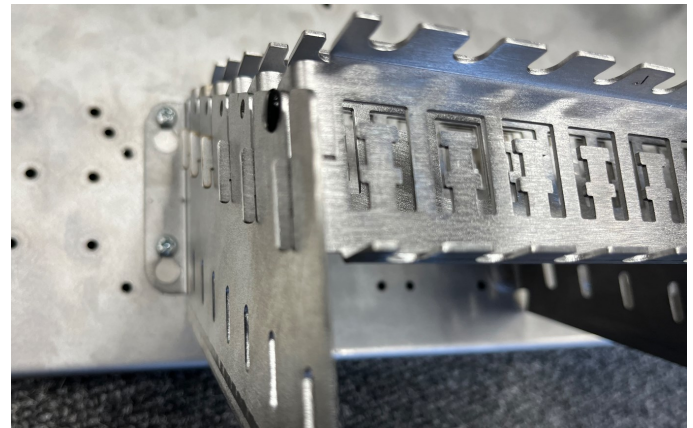
Next slide a snap rivet into position, aligning the duct manager with it's mounting bracket.

Repeat with a 2nd snap rivet on the other side of the same manager (now shown)

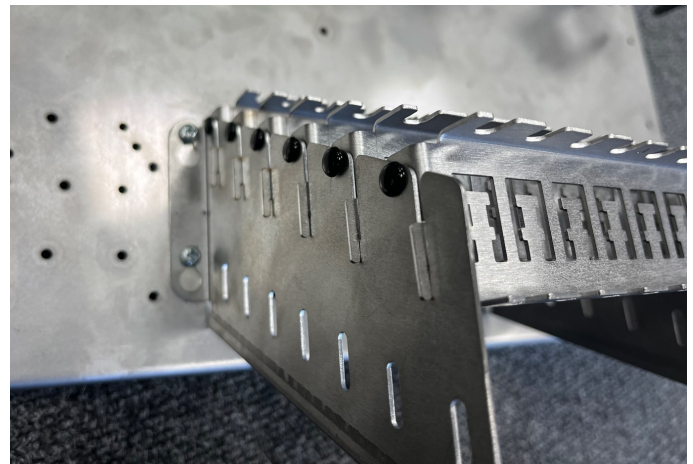


Push the rivet head home to secure the manager in place.

Repeat this step on the other end of the manager (not shown)



Repeat this process for each of the duct managers, until all duct managers are firmly secured to their mounting brackets.



## Midspan Unit Installation



Remove fixing screws from the cabinet

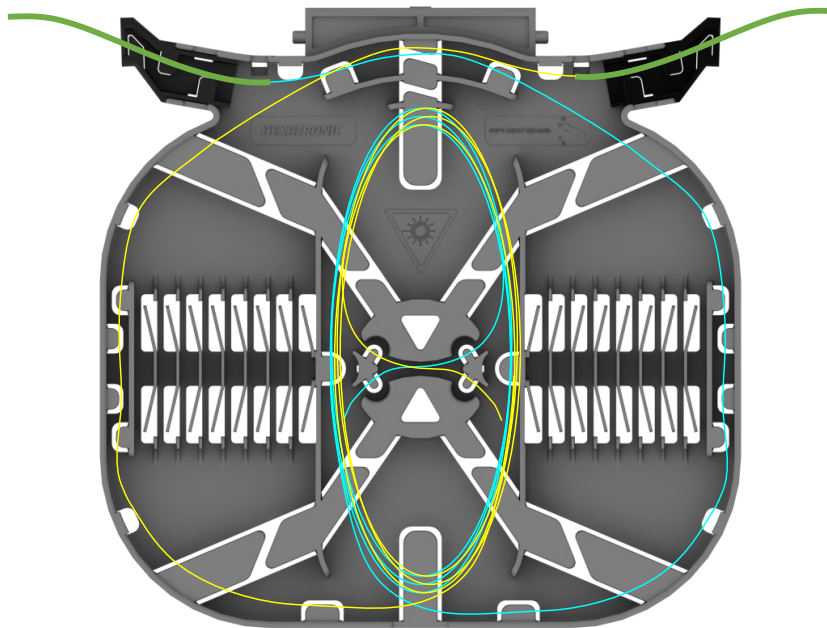


Position the Mid-span unit and install top two screws loosely

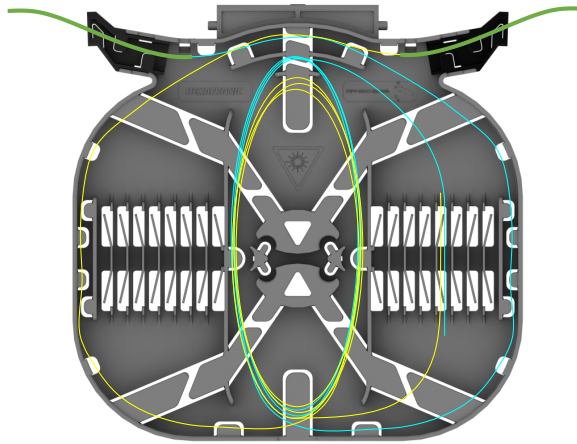


Install the remaining screws and tighten all fixings.

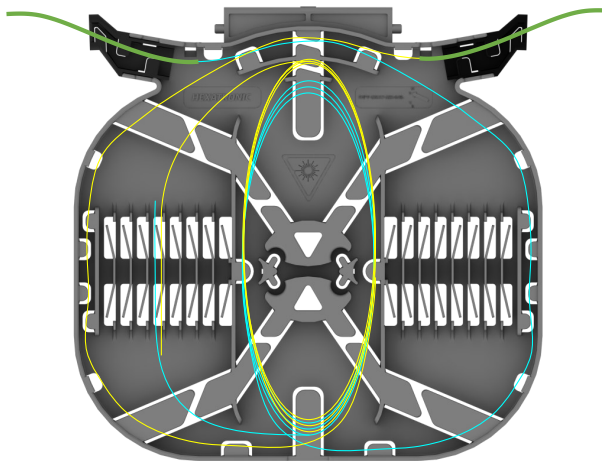
## Fiber Routing in Splice Trays



Fiber Storage & Crossover routing



Right hand splice routing



Left hand splice routing

### Ordering Information

Part number	Description
ISCCF-SEC5-1X8-P048-ALC-2	BACKBOARD - Cityfibre - Secondary 5mm - 1x8 Splitters -48 Sub